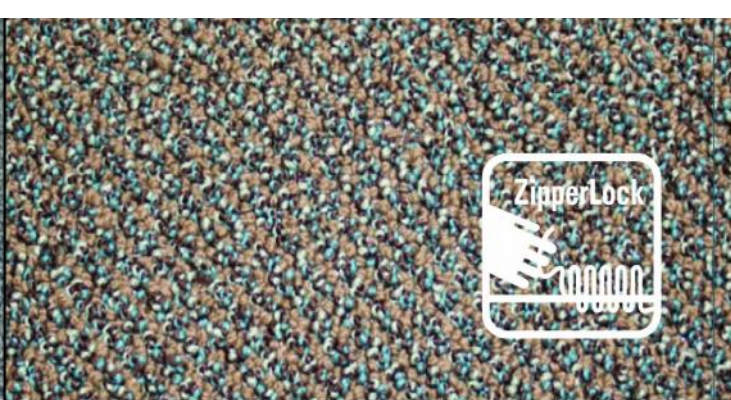


Ordinary loop pile carpet



Northstate ZipperLock[®] carpet

ZipperLock[®] Technology

In regular loop pile carpet, one loose yarn can unravel into an unsightly continuous zipper. Dual Bonding and Interlocking Tuft Placement . . . means our carpets cannot unravel like regular commercial carpets.

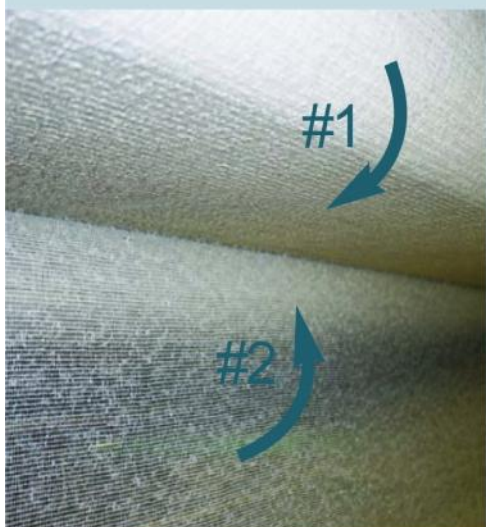


dual latex bonding

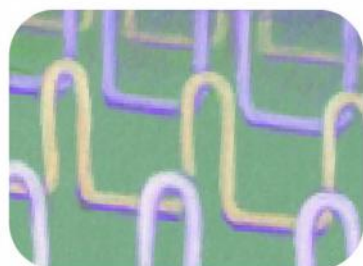
Latex #1 is applied to the yarn on the primary backing and penetrates the yarn bundles to ensure fibre bond and tuft lock.

Latex #2 has a higher viscosity and is applied to the secondary backing to provide superior lamination strength.

Northstate carpet with Interlocking Tuft Placement and Dual Latex Bonding is covered by our ZipperLock[®] warranty because it can't unravel or zipper.



Northstate's ZipperLock[®] carpets will not unravel or zipper due to interlocking tuft technology and dual latex bonding.



Ordinary loop pile carpet



ZipperLock[®] pile carpet

ZipperLock^(R) Technology

here's how it works:

Conventional loop pile carpet is tufted in continuous parallel rows.

This method does nothing to prevent zippering/unravelling.

Northstate's interlocking tufts are staggered in a special crossover pattern.

When a loop is pulled, it hooks with its neighbour and does not zipper/unravel.



Ordinary loop pile carpet



ZipperLock^(R) carpet



Northstate's ZipperLock^(R) carpets will not unravel or zipper due to interlocking tuft technology and dual latex bonding.

specify

**ZipperLock^(R)
with
dual latex**